

first for homes

first for property in life - firstforhomes.co.uk

Contact Allan England's Team

01592 752 944



Dura Park, Glenrothes

Offers over £99,995

Dura Park, Glenrothes

Welcome to Dura Park, a charming 2 bedroom extended end-terraced bungalow set in a quiet cul-de-sac setting with woodland boundary. This inviting bungalow is located in the sought-after area of Woodside, Glenrothes.

Allan England's Award Winning Team at First For Homes are proud to welcome to the market a wonderful 2 bedroom extended end-terraced bungalow. This quaint home provides a relaxing atmosphere and comprises on the one level of: entrance hallway with 2 built-in cupboards, spacious lounge with a lovely window offering natural light, the well-proportioned kitchen provides access to the conservatory which is an ideal setting for a dining area and provides woodland views and access to private rear garden. This lovely home boasts 2 bedrooms and benefits from a shower room.

Externally the property provides a small garden to the front and private garden grounds to the rear with a woodland outlook. Additionally the property benefits from ample storage.

EPC Rating - D
Council Tax Band - A
Home Report Value - £105,000

Call First For Homes - First For Trust...First For Service...First For Aftercare

Glenrothes is regarded as one of the most successful Towns in Scotland with a wealth of local amenities including Kingdom Shopping Centre as well as sport and leisure at Michael Woods and a multi-screen cinema. Glenrothes boasts its very own 18-hole Golf course and both Primary and Secondary schooling are available. For the commuter the A92 allows swift access to Edinburgh and there are railway stations at both Thornton and Markinch.





SITUATION – Glenrothes

ENTRANCE HALLWAY

LOUNGE 12'9" x 11'9" approx (3.90m x 3.60m approx)

KITCHEN 9'3" x 9'2" approx (2.84m x 2.80m approx)

CONSERVATORY EXTENSION

10'9" x 9'4" approx (3.30m x 2.86m approx)

BEDROOM 1

14'11" x 9'3" approx (at widest point) (4.57m x 2.83m approx (at widest point))

BEDROOM 2 / STUDY

9'5" x 6'2" approx (2.88m x 1.90m approx)

SHOWER ROOM

FRONT AND REAR GARDEN GROUNDS

ON STREET PARKING

INFORMATION



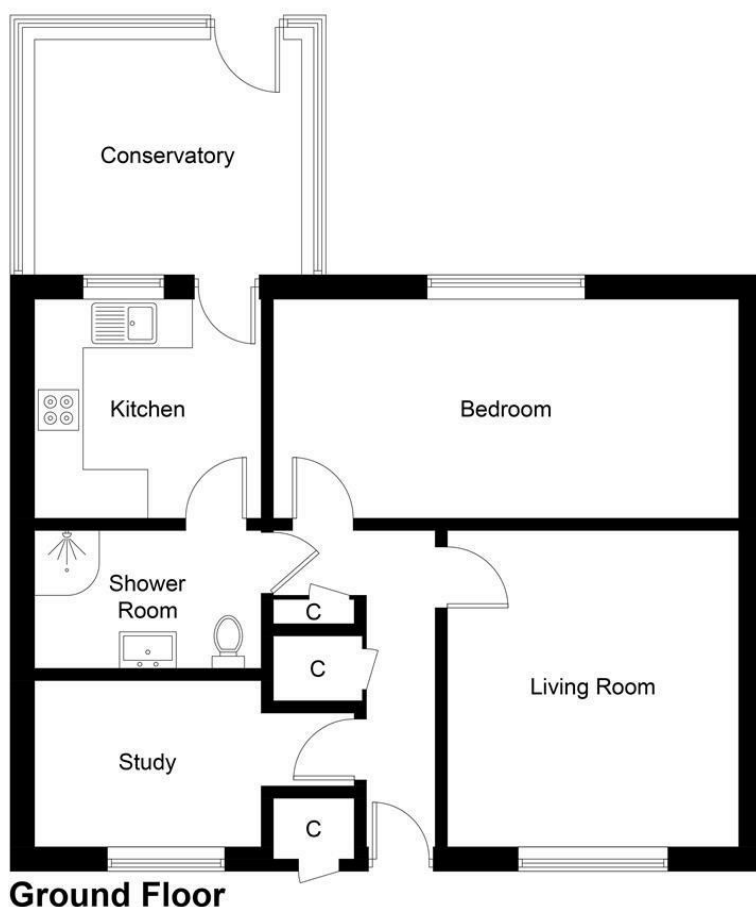


Illustration for identification purposes only, measurements are approximate, not to scale. floorplansUsketch.com © (ID1119437)

Information

These particulars are prepared on the basis of information provided by our clients. We have not tested the electrical system or any electrical appliances, nor where applicable, any central heating system. All sizes are recorded by electronic tape measurement to give an indicative, approximate size only. Prospective purchasers should make their own enquiries – no warranty is given or implied. This schedule is not intended to, and does not form any contract.

FREE Valuation

Selling Your Home?

Choose first for homes - a highly experienced estate agency team you can trust to sell your home at the highest possible price. Offering fantastic savings on selling fees, with no compromise on service, free professional photography highlighting your home in its best light, first for homes will be your first choice. Contact us today to arrange your appointment.



first for trust



first for service



first for aftercare

first for homes
first for property in life - firstforhomes.co.uk

Contact Allan England's Team
01592 752 944

32 North Street, Glenrothes, Fife KY7 5NA
Fax: 01592 807947
sales@firstforhomes.co.uk
www.firstforhomes.co.uk